

脳血管障害  
レポート①

虚血性脳卒中患者  
における自己間葉  
系幹細胞移植の  
長期追跡調査

JIN SOO LEE, et al.  
A Long-Term Follow-Up Study of  
Intravenous Autologous  
Mesenchymal Stem Cell  
Transplantation in Patients With  
Ischemic Stroke  
STEMCELLS2010;28:1099-1106

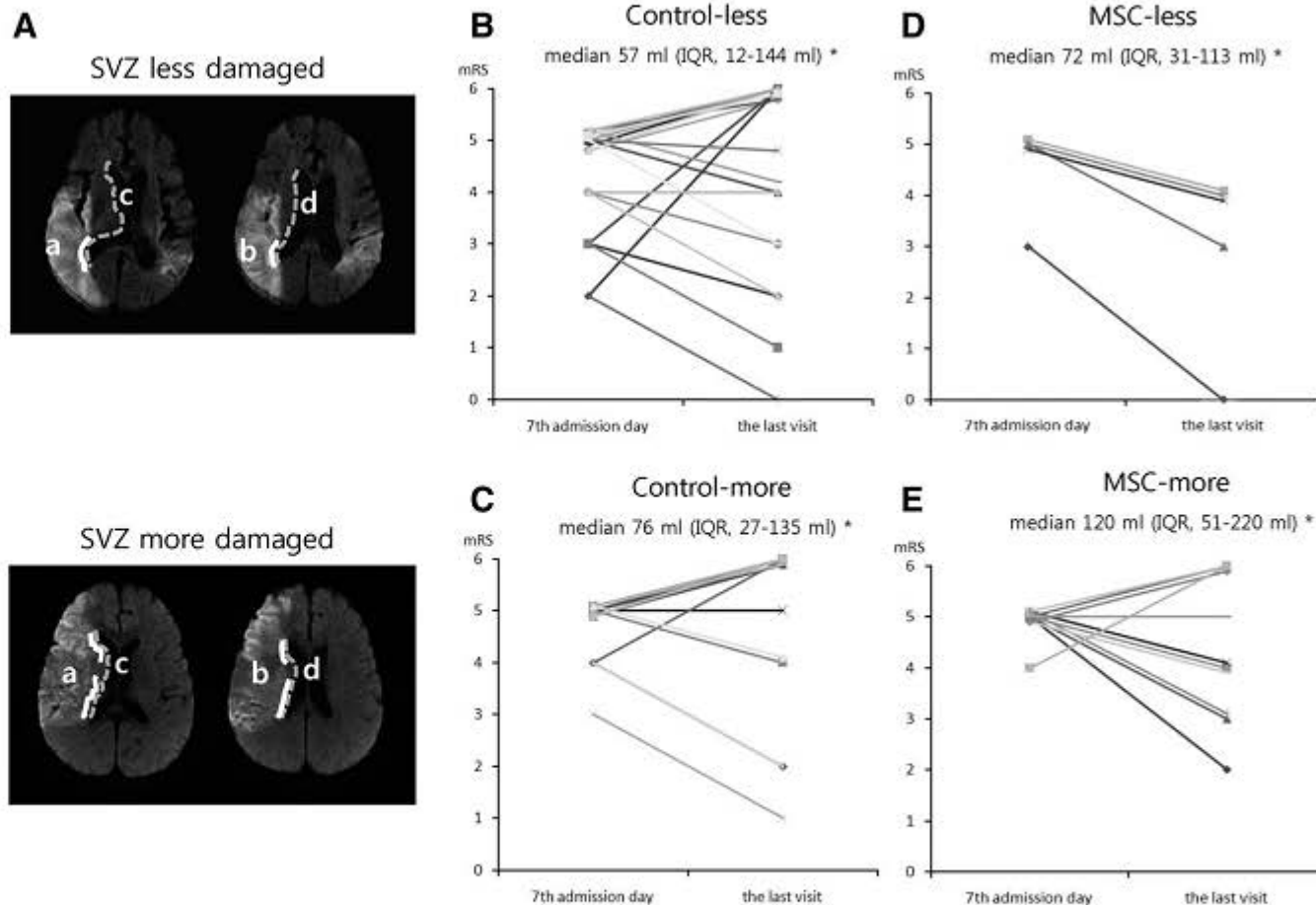


Figure 5. Association of intactness of the SVZ with effects of MSC transplantation. (A): Examples of diffusion-weighted images of patients with the more and less SVZ involvement. The SVZ involvement % [length of infarcted SVZ (a & b)/total length of SVZ (b & d)]. Only the ipsilateral side was considered. (B-E): The changes in the mRS scores according to the involvement of the SVZ. Improvement in functional outcome was consistently observed only in the MSC group when the SVZ was less damaged (D). There was no significant change of mRS in other groups (B, C, and E). The symbol "\*" indicates the diffusion-weighted imaging lesion volume upon admission was not different among groups. Abbreviations: IQR, interquartile range; MSC, mesenchymal stem cell; SVZ, subventricular zone.

JIN SOO LEE, et al.